

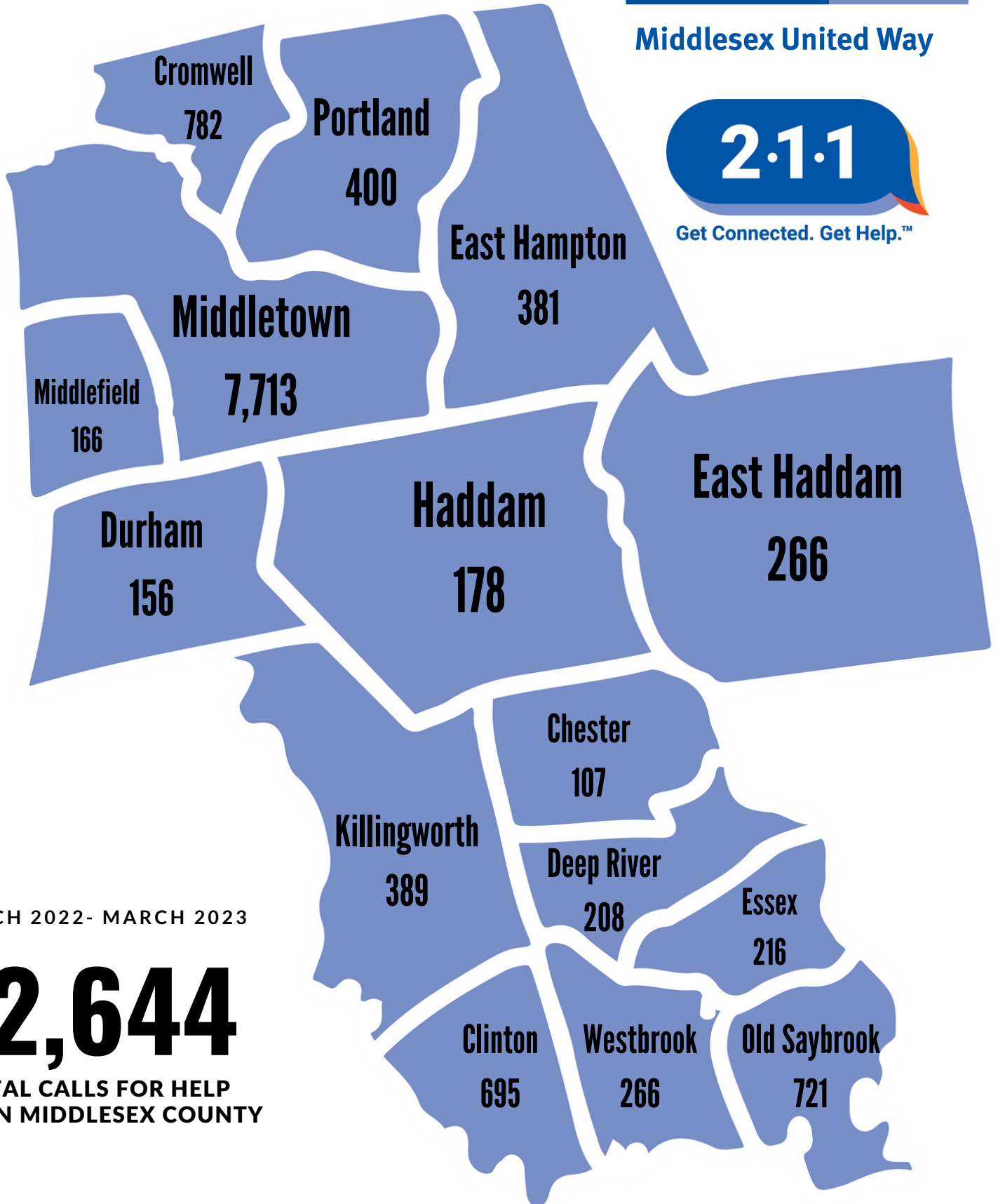
NUMBER OF 211 HOTLINE CALLS PER MIDDLESEX COUNTY TOWN



Middlesex United Way



Get Connected. Get Help.™

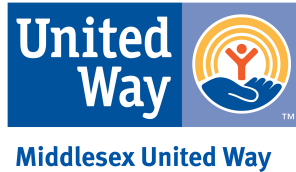
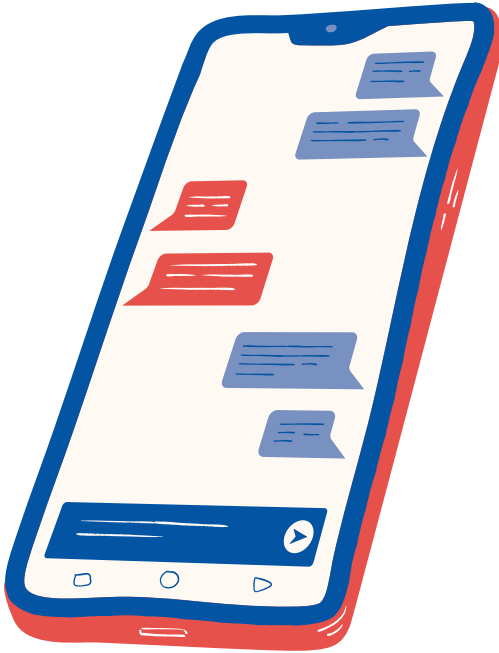


MARCH 2022- MARCH 2023

12,644

TOTAL CALLS FOR HELP
WITHIN MIDDLESEX COUNTY

*2-1-1 Data provided by Connecticut United Ways: CT.211counts.org. Map created March 2023



What is 2-1-1?

2-1-1 is a free, confidential information and referral service that connects people to essential health and human services 24 hours a day, seven days a week online and over the phone. 2-1-1 is a program of United Way of Connecticut and is supported by the State of Connecticut and Middlesex United Way.

The Impact of 2-1-1

*January 1, 2022- December 31, 2022

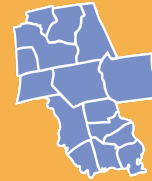


Connecticut

330,010 Total Calls

Top Requests:

Housing & Shelter: 21.6%
Healthcare/Covid-19: 31.7%



Middlesex County

13,091 Total Calls

Top Requests:

Housing & Shelter: 29.9%
Mental Health & Addiction: 26.2%

988
SUICIDE
& CRISIS
LIFELINE

988 has been designated as the new three-digit dialing code that will route callers to the National Suicide Prevention Lifeline.

When people call, text, or chat 988, they will be connected to trained counselors that are part of the existing Lifeline network. These trained counselors will listen, understand how their problems are affecting them, provide support, and connect them to resources if necessary.

